



BUILDING TOMORROW SINCE 1903

Paul Brown Stadium Renovation Projects



"No job has been too small nor too large to warrant the active attention to all details which our complete organization renders. A contract, to us, is not just another job, to be built for profit only, but a work of art to be completed in a workmanlike manner. We offer the prospective owner and architect, our reputation, skill and integrity. We ask only the opportunity to prove our ability."

-Jacob Warm, 1935
Founder of the Warm Companies

PREVIEW



July 25, 2015

An open letter on behalf of JDL Warm Construction –

I have had the pleasure of working with JDL Warm for the past two years on construction projects that are critical to the Cincinnati Bengals, and I wanted to take the opportunity to share our experience with them and to recommend them for other projects. They are a high performing company worthy of your consideration.

I had known the principals at JDL Warm for many years, however, we had not worked together, so the opportunity to collaborate on construction projects was a new direction for us. As with any new direction, you begin with uncertainty, but our uncertainty quickly turned into confidence, and we have become very strong fans of JDL Warm and their approach to projects.

Our first project together involved rebuilding many of our player spaces including a new weight room, exercise space, player lounge, cafeteria, and even a television studio. For this work, JDL Warm provided us an experienced construction management crew and assembled a broad and seasoned group of specialty trades for support as needed. On the project, JDL Warm faced site restrictions, timing restrictions, access limitations, and they faced all this knowing that there were very high demands for quality work given the spaces involved. JDL Warm handled all of these challenges – along with the normal “construction surprises” that arise – and they handled them all professionally and solved each challenge efficiently while providing us with top level results.

Throughout the process, JDL Warm acted a genuine partner in the process, worked to understand our goals, and approached the work with the mindset of achieving a great result consistent with our vision for the spaces. They were such a strong partner that we naturally turned to them when we had a second project that involved rebuilding concession stands at Paul Brown Stadium. JDL Warm’s work on those projects has been top shelf as well, and our fans are already enjoying the fruits of these labors. The overall range of what we have asked JDL Warm to perform has been broad – from high-end millwork, to performance athletic surfaces, to standard interior construction, to exterior build-out – and they have performed all of this work well.

JDL Warm has met our high goals for the work involved, and we would very much look forward to partnering with them again on any construction project that might appear on our horizon. You should too – they are good people who perform good work and are enjoyable to work with. I would be happy to discuss any of this in more detail, and I invite you to contact me at 513.455.8314. Thank you.

Very truly yours,

A handwritten signature in black ink, appearing to read "Troy A. Blackburn".

Troy A. Blackburn
Vice President

WEIGHT ROOM

Conversion of unused stadium storage space and integration of previous multi purpose room into a 30,000 SF state-of-the-art NFL physical training facility. Strategically removing the lower portion of 2 walls to connect the previously unused space and create a fully integrated weight room and physical training area. New "Attack Turf" was installed over existing basketball flooring. New weight room area had a "Regupol Abzorb" as the underlayment for the "Regupol Aktiv" for the workout surface. New sub roof installed over weight room to protect from the outdoor elements above.

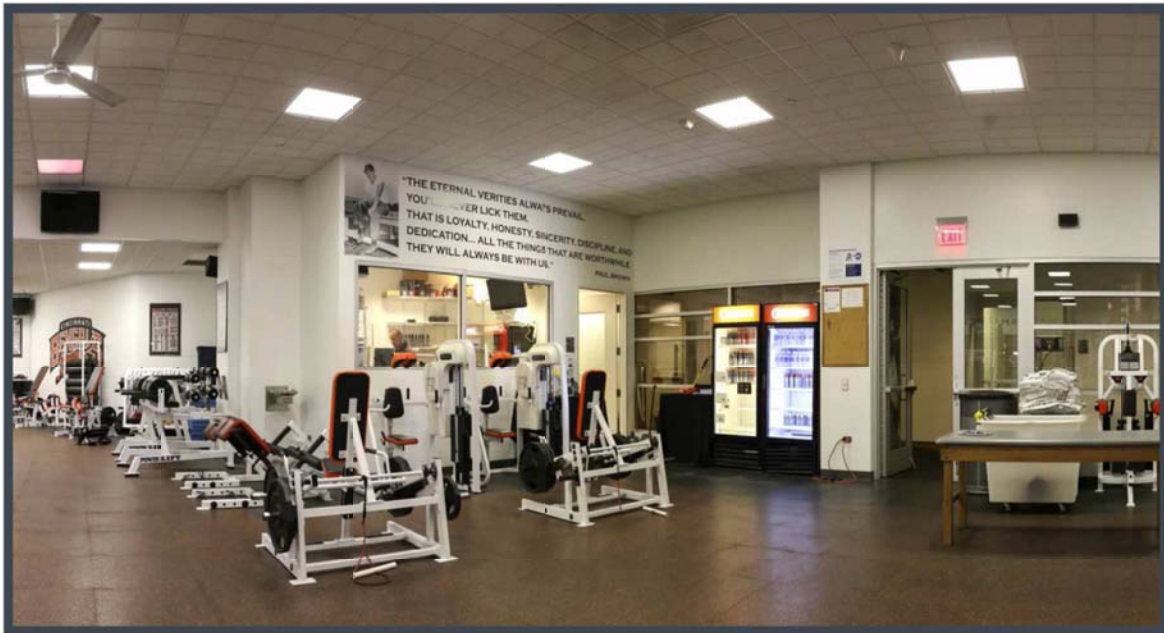
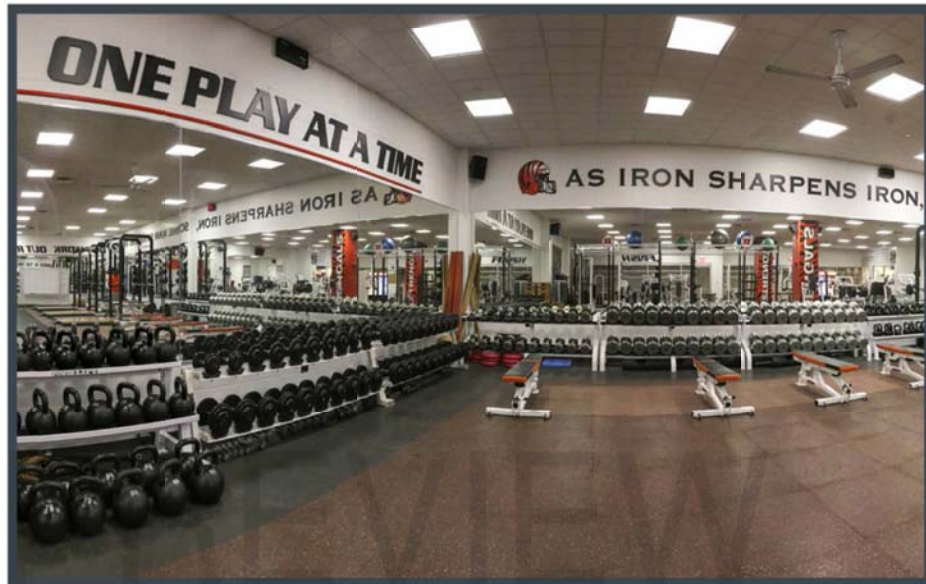
BEFORE



AFTER

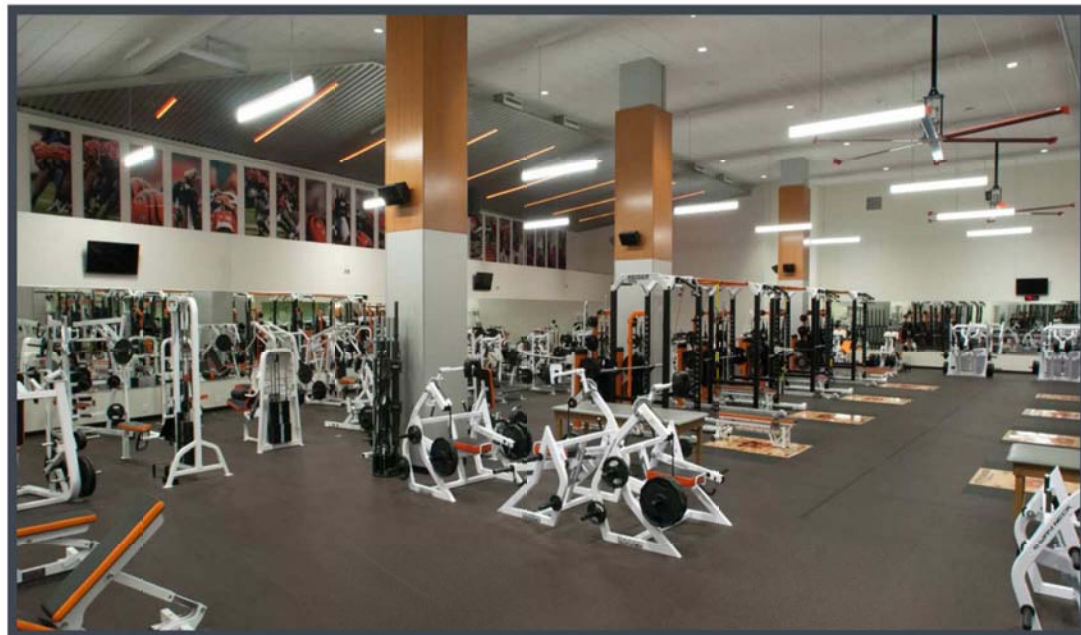


BEFORE



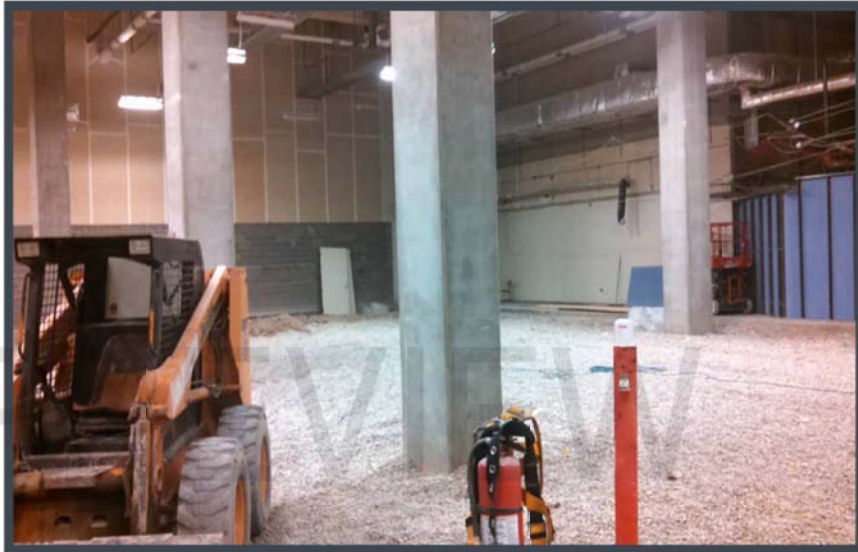


AFTER



DURING CONSTRUCTION

GRAVEL
PLACEMENT
PRIOR TO
VAPOR BARRIER
AND SLAB



MILLWORK
COLUMN
WRAP





**PREP FOR ATHLETIC
FLOOR/DRYWALL FINISHING**



SUB-ROOF CONSTRUCTION



EQUIPMENT & UTILITY LINES UNDER SLAB



NEW CORRIDOR WALL FRAMING

"The JDL Warm staff accommodated our fast paced environment better than any other contractor we have worked with. From ownership, to project management to the front line guys they provided value to us at every level and allowed us to accomplish in a short period what we thought would take much longer."

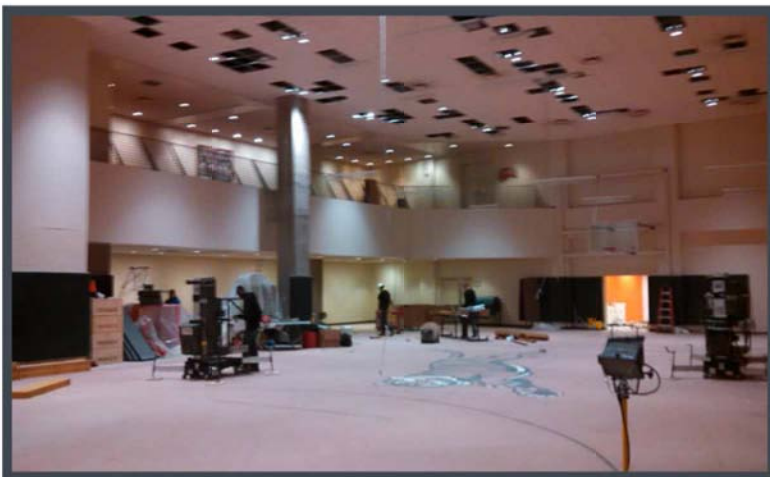
*-Bob Bedinghaus,
Director of Business
Development*



**LAYING NEW
FIELD TURF**

IMPLEMENTATION OF DUEL VIEW OFFICE

WHILE IN OFFICE,
COACHES ARE ABLE TO
HAVE FULL VIEW OF
WEIGHT ROOM AND
TURF TRAINING AREA



**NEW LIGHTING
ROUGH-IN FOR
INSTALL**



**RUBBER
UNDERLAYMENT
IN WEIGHT ROOM**



VAPOR BARRIER BELOW SLAB



**WEIGHT ROOM IMMEDIATELY
AFTER SLAB IS POURED**

"Whoa! When you bring free agents in here now between the cafeteria and weight room and all the upgraded facilities that is going to be a great asset. Warm Construction did a great job to benefit the entire organization."

*-Dave Lapham, Bengals Radio Announcer
and Former Player*

FINISHED WEIGHT ROOM



"It's exciting how functional the new facility is and the utilization of the space in a tight location. You can do everything from lift weights to push sleds all in one location. The versatility is a big plus."

*-Andrew Whitworth,
Pro Bowl Offensive Tackle*

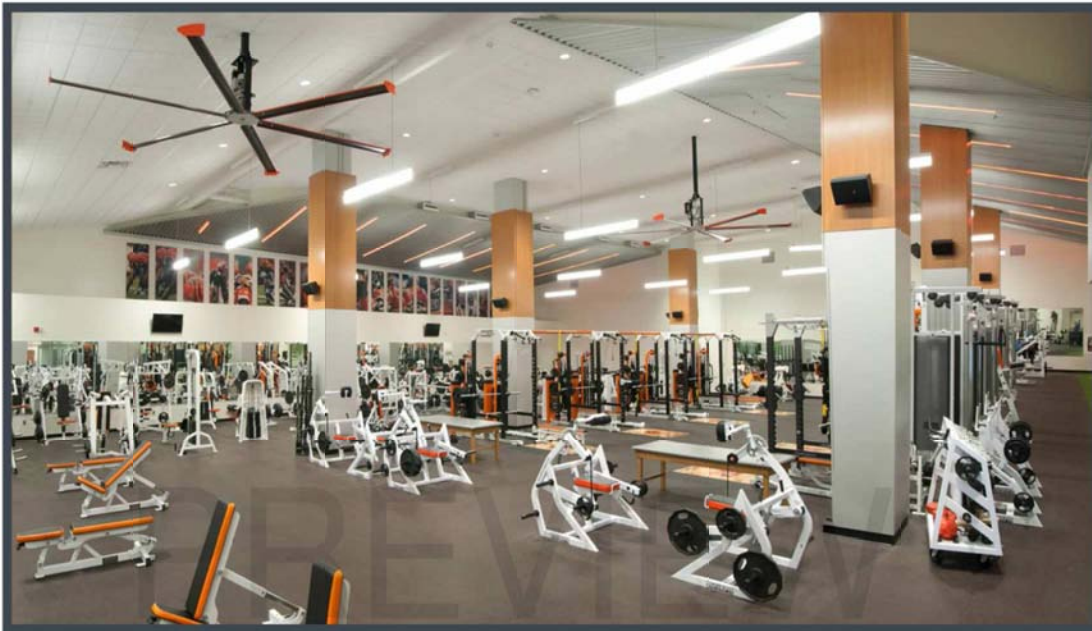


"One of the better if not the best in the NFL. The turf right next to the weight room adds efficiency. Definitely a plus for free agency recruitment."

*-Eric Winston,
Offensive Tackle &
President of NFLPA*

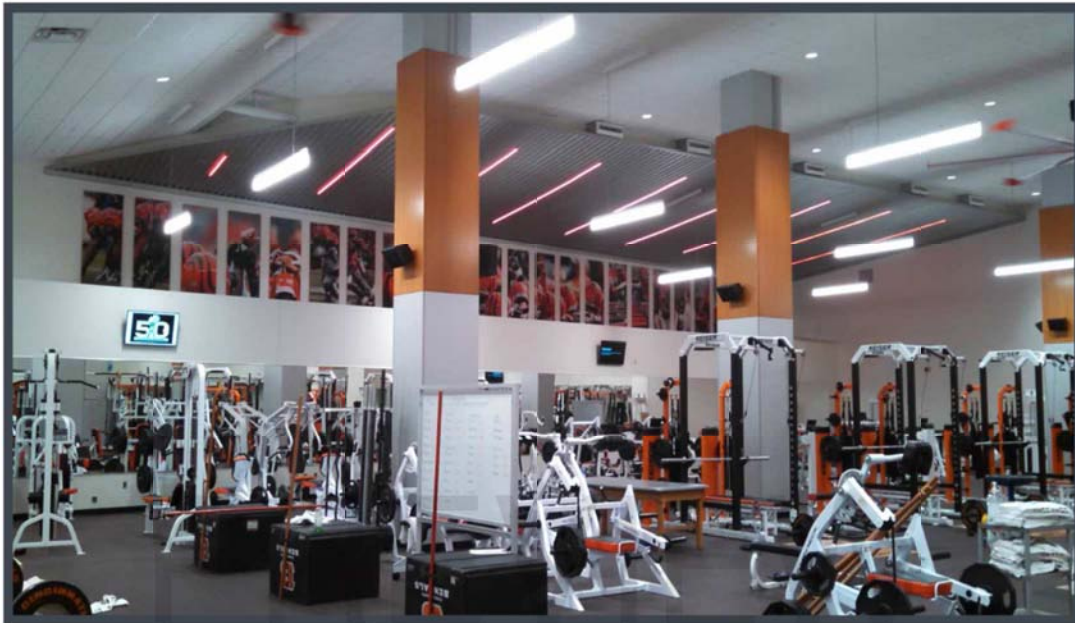






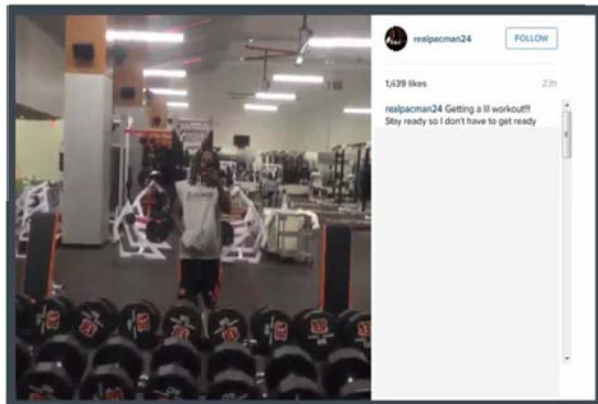
"Way it is now makes
you want to go
workout, makes you
want to improve your
body. Its become a
social gathering place
as much as it is a
world class facility."

*-Wallace Gilberry,
Defensive End*



"Its great to have one of the best facilities in the league. Combined with our staff it provides a place where you can go and get everything that you need done. Thank you to the organization and Warm Construction and the others involved for creating this state of the art space." -Michael Johnson, Defensive End





"Top shelf. As good as there is in this league all the way around. Great foresight and planning."

-AJ Hawk, Pro Bowl Linebacker

PLAYERS CAFETERIA

The existing weight room space became available for repurposing when the new weight room and physical training facility were created enabling the creation of a new, vibrant and much larger cafeteria for the players, staff and coaches. This new space was not only more functional for high quality food service but also offered the ability to have a wider range of meals prepared and promoted bonding time spent together.

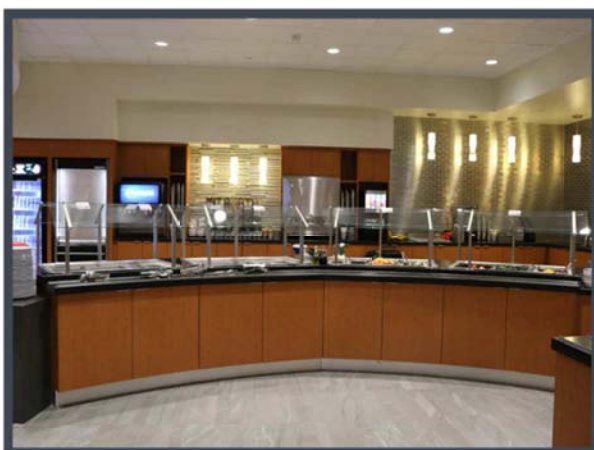
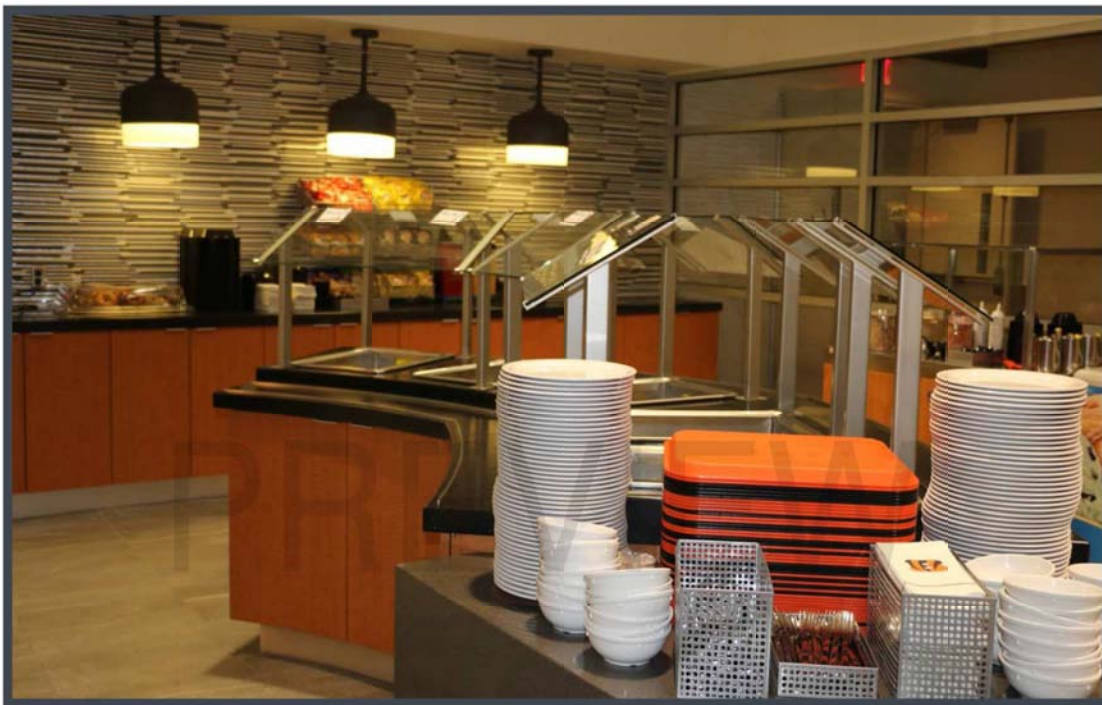




"During the construction of our Weight Room, Cafeteria, and Concession Stand Refresh projects we enjoyed a business relationship founded on mutually agreed upon goals and honest communication, both of which are fundamental to our shared success. This relationship is not only visible at the on-site management level, but also has been fostered by JDL Warm Construction Company's corporate officers. If you are seeking a company

with a genuine interest in business growth and being active partners on your team, I recommend JDL Warm Construction Company for your Project."

*-Eric Brown, Managing Director
Paul Brown Stadium*







"It was a pleasure to work with your company on our recent weight room/team buffet project at Paul Brown Stadium. Your management team, foreman, crew and subs were exceptional in every phase of construction. They were easy to work with and were willing to put up with my last minute suggestions and drawings on the back of napkins! Every project has its rough edges but your group tackled them like pros! I appreciate the job you did and our friendship for the future."

*-Bill Connelly
Business Manager/Team Operations*

CONCESSIONS

The renovation of the concessions was a critical project, awarded while under construction for the player space, due to the high profile exposure and the fan experience associated with it. It was a complete re-branding of all existing spaces (Gold Star Chili, Papa Johns, etc.) as well as the introduction of several new ones such as the Queen City Taphouse and the first Wings & Rings outside their traditional stores. In addition to these new luxuries fan experiences were further enhanced with a made to order Burgers & Brews. Tight timeframes and budgets had to be met and value engineering was required both prior to commencing and while under construction to maintain the budget, which ultimately upon completion was under budget.

BEFORE



AFTER



QUEEN CITY TAP HOUSE

Renovated bar space that was opened up and added seating into the concourse along with a trellis for the look and feel of creating one space that defines the Tap House area. An homage to Cincinnati's current craft beer industry as well as its rich heritage.







Wings & Rings first foray into a non traditional store location. Wings & Rings started in Cincinnati and recently formed a great partnership with the Cincinnati Bengals. Warm Construction was proud to be a part in activating that partnership via our construction services.





Creative use of a former shipping container to create a free standing and portable cocktail bar.

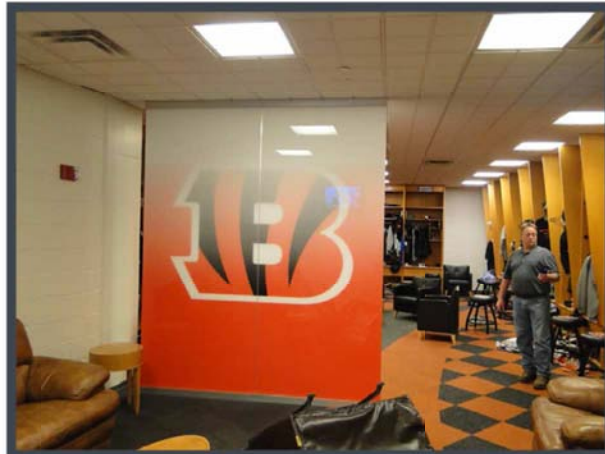


Kitchen, cosmetic and branding modifications for Jean-Robert de Cavel as he brings his french cuisine to the Club Level of PBS.

ENTRANCE
TO THE
CAFETERIA
AND WEIGHT
ROOM



WEIGHT ROOM WOOD FLOOR
PANELS



DIVIDER BETWEEN LOCKER AREA
AND SHOWERS IN COACHES
LOCKER ROOM



**ON SITE
MEDIA
ROOM / TV
STUDIO**



**PLAYERS
LOUNGE**



Complex projects require all parties involved to work together towards a common goal, by all accounts that has been achieved. Warm Construction values our reputation, integrity, quality of work and of course client satisfaction as our benchmarks of success. We are honored to have been able to partner with the Cincinnati Bengals on such important projects and bring two longtime Cincinnati organizations together. Thank you to the entire Bengals organization for the opportunity to prove ourselves and build great facilities, relationships and friendships along the way.

- Jake Warm, CEO JDL Warm



BUILDING TOMORROW SINCE 1903

1125 W 8th Street
Suite 100
Cincinnati, OH 45203

(513) 241-3787
www.jdlwarm.com



BUILDING TOMORROW SINCE 1903

1125 W 8th Street
Suite 100
Cincinnati, OH 45203

(513) 241-3787
www.jdlwarm.com